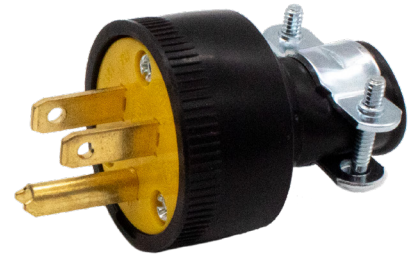




# PICO®

[www.picocanada.com](http://www.picocanada.com)



## **NEW!** Industrial Grade Black Electrical Plugs & Sockets

New Black Electrical Plugs and Sockets work with SJ/SJT/SJE/S Cord types.

Solid Brass blades provide excellent conductivity.

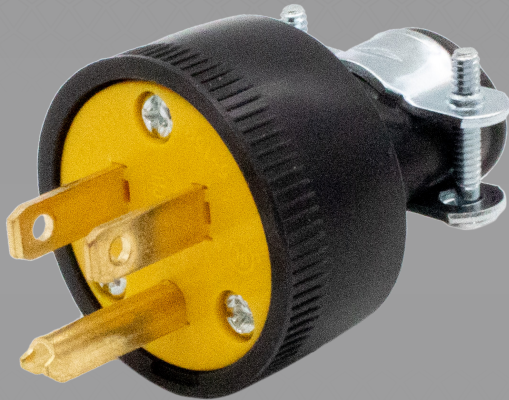
Rugged PVC and Thermoplastic Rubber construction ensures lasting durability in the toughest environments.

**CORD TYPE:** SJ/SJT/SJE/S

**GAUGE:** 12/14/16

**RATING:** 15A, 125V

**TYPE:** 2P, 3W



**8955**



**8954**

Make **PICO's**  
Industrial Grade Black Electrical Plugs  
YOUR choice  
to get the job done right.

0322



# PICO®

Visit [picocanada.com](http://picocanada.com) to learn more