

Loaded Brake Backing Plates

TIME-SAVING SOLUTIONS | **ZERO ASSEMBLY REQUIRED**

BACKING PLATE

FULLY ASSEMBLED

PREMIUM PARKING BRAKE SHOES

MAIN BRACKET (CALIPER BRACKET)

Backing plate and emergency brake repairs can be time-consuming and unpredictable when corroded components are purchased and replaced individually.

Dorman's aftermarket-exclusive loaded backing plates include pre-mounted parking brake shoes and parking brake hardware to simplify repair, decrease labor time and reduce customer comebacks.

926-270 (Rear Right) | 926-271 (Rear Left)

Ford F-250/350 Super Duty & Excursion 2005-99

Pop Code: B | VIO: 1.668.182

926-272 (Rear Right) | 926-273 (Rear Left)

Ford F-250/350/450/550 Super Duty 2012-05

Pop Code: B | VIO: 1.495.050

INCLUDES

PRE-MOUNTED PARKING BRAKE SHOES AND E-BRAKE HARDWARE.



BRAKE SHOE RETURN SPRING



BRAKE SHOE HOLD DOWN HARDWARE



BACKING PLATE ANCHOR BOLTS



BRAKE SHOE ADJUSTER SPRING



BRAKE SHOE ADJUSTER

Rear Crankshaft Oil Seal Installer

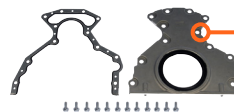
MUST-HAVE TOOL | **ENSURES PROPER REPAIR**



635-000

General Motors 2020-97, Isuzu 2016-03, Saab 2009-05

Pop Code: A | VIO: 14.408.528



WANT TO INSTALL OUR 635-518 REAR MAIN SEAL COVER KIT PROPERLY?

YOU NEED THIS TOOL!



- Makes it fast and easy to ensure the correct alignment of a new rear main seal and the crankshaft to prevent damage and leaks
- Zinc-plated and clear-chromate-coated for years of reliable service
- Designed to work with more than 14 million vehicles

SEE OUR INSTALL VIDEO:
YOUTUBE.COM/DORMANPRODUCTS

Pre-Pressed Rear Axles

TIME-SAVING SOLUTIONS



PROBLEM:

On many late-model Toyota Tundra pickup trucks, without special equipment it's easy to damage the rear wheel bearing housing when pressing out the old bearing or pressing in the new one.

FIX:

Dorman's OE FIX pre-pressed axles include all the major components needed for a complete repair, pre-assembled and ready to install right out of the box, with no shop press or other specialized equipment required.

926-145 (Rear Left)
926-146 (Rear Right)

Toyota Tundra 2016-2017 (5.7L engine)

Power Band Intercooler Hose Clamp

UPGRADED SOLUTION



PROBLEM:

The flat surface on the original turbo hose clamp applies uneven force, causing pressure leaks.

FIX:

The patented curved profile of this Dorman OE FIX Power Band Clamp creates a stronger seal to better protect turbo components.

55246
3-3.75"

Micro Power Module

RELIABLE REPLACEMENT



- Fixes electrical issues caused when factory module fails from moisture intrusion or other corrosion
- Reliably tested to resist water, vibration and extreme temperatures

601-039

BMW 530i 2005-04, BMW 545i 2005-04, BMW 645Ci 2005-04, BMW 650i 2007-06, BMW M6 2007-06

Ring And Pinion Master Installation Kit



- Includes bearings, shims, crush collar, hardware, gasket material, gear marking brush and thread lock compound
- Designed for more than 2 million Ford and Lincoln vehicles on the road today

697-029

Ford Expedition & F-150 2011-07, Lincoln Navigator & Mark LT 2011-07, Ford E-150 2010-2007

Power Steering Cooler

UPGRADED SOLUTION



PROBLEM:

The original power steering cooler on certain Chevrolet Impala model years fails when the wire-style fins corrode, bend and break.

FIX:

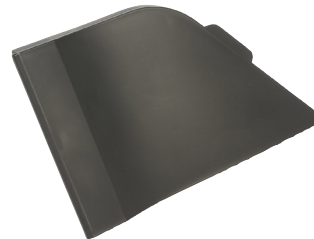
This Dorman OE FIX cooler features a more robust stacked-fin design for greater durability and longer service life.

918-336

Chevrolet Impala 2013-12, Chevrolet Impala Limited 2016-14

Fuel Door Hinge Trim Cover

AFTERMARKET-FIRST



- This trim cover piece is a direct replacement for the failure-prone fuel door on more than 100,000 Transit vans
- Simple snap fit installation to restore appearance and functionality

926-382

Ford Transit 2020-15

Knock Sensor And Harness Kit

COMPLETE SOLUTION



- Combines both necessary sensors and this aftermarket-exclusive wiring harness that joins them for a complete repair in one package
- Benchmarked against original components for performance and quality

926-387

Lexus 2003-96, Toyota 2006-94

Magnetic Ride Control Shock

ADVANCED TECHNOLOGY



- Direct replacement that uses the same advanced technology as the original equipment on more than 4 million GM vehicles
- Dorman engineered and newly manufactured, with no core charge

949-700

Cadillac 2019-15, Chevrolet 2019-14, GMC 2019-15